

CERTIFIED LAND CORNER RECORDATION

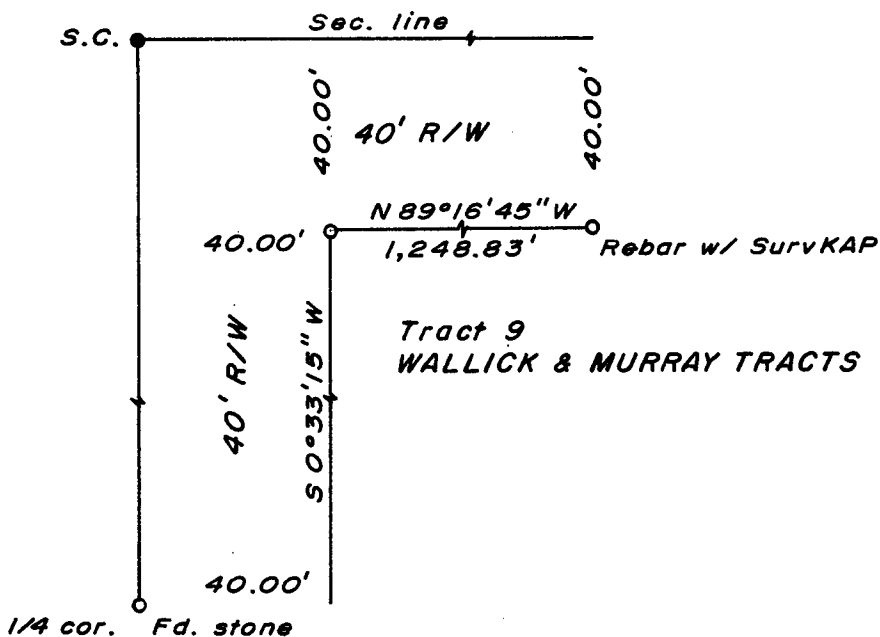
DESCRIPTION OF CORNER EVIDENCE FOUND, AND ORIGINAL RECORD (if known)

LOCATION Corner position re-established from monumentation found in Wallick & Murray Tracts.
 S.18 S.17
 S.19 S.20 Plat of Wallick & Murray Tracts calls for 3/4" iron pipe, not found.
 T.13N., R.66W.,
 6th P.M.

DESCRIPTION OF MONUMENT AND ACCESSORIES ESTABLISHED TO PERPETUATE THE ORIGINAL LOCATION OF THIS CORNER:

At the corner: Set a 1 1/2" dia. x 30" long (concrete-filled) iron pipe with brass cap.
 Accessories: A 5/8" dia. x 24" long rebar with Surv KAP bears S 0°33'15" W, 40.00 feet; thence S 89°16'45" E, 40.00 feet distant.

SKETCH, WITH COURSE AND DISTANCE TO ADJACENT CORNER IF DETERMINED IN THIS SURVEY.
 (May Sketch or Paste Reproduction on Reverse Side.)



Brass cap set 4" above gnd.
 Brass cap stamped:
 T.13N. R.66W.
 S.C.
 S.18 S.17
 S.19 S.20
 LS 519 1974

I, R.L. Hudson certify that I have carefully performed ~~or reviewed~~ the work done on the diagrammed corner as reported on this recordation form and approve the same.

R.L. Hudson Wyoming L.S. No. 519
 Signature of Surveyor Registration No.

STATE OF WYOMING,
 Office of Clerk and Recorder,
 County of Teton

This "corner record" was filed for record on the 5 day of August, 1974, was noted on the cross-index plat and is assigned page No. _____, in book No. _____.

John B. Huismann
 County Official

Cross Index No. <u>15</u>	T. <u>13</u>	R. <u>66</u>	<u>6</u> Mer.
_____	T. _____	R. _____	Mer.
_____	T. _____	R. _____	Mer.
_____	T. _____	R. _____	Mer.
_____	T. _____	R. _____	Mer.
_____	T. _____	R. _____	Mer.
_____	T. _____	R. _____	Mer.

The State of Wyoming }
County of Laramie } SS

This instrument was filed for record
at 2:15 o'clock P. M. on the
5 day of August
A. D. 19 24 and duly recorded in
Book on page

John B. Williams

County Clerk & Ex-Officio Register of Deeds
By _____, Deputy